

Curious Minds: Setting Things Straight About Marijuana

Andrea G. Barthwell, MD, FASAM

CEO of EMGlobal, Founder and Director of Two Dreams

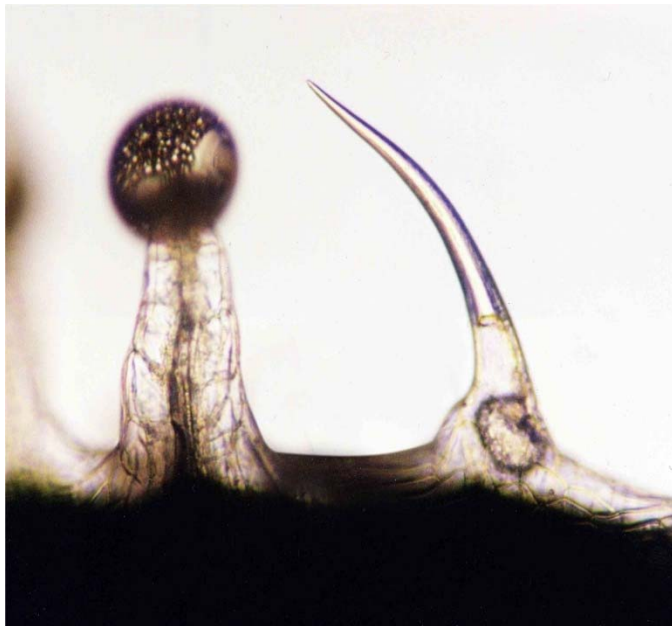
September 20, 2014

Specialty Cinema

Disclosures

- ★ No conflict of interest with this content
- ★ Potential perception of conflict:
 - ★ Collaborator: Caron Foundation
 - ★ Consultant: Alvee Laboratories, Braeburn Pharmaceuticals, Millennium Laboratories
 - ★ Founder: The Parents Academy (supported, in part, by Caron Foundation)
 - ★ Managing Partner: Treatment Partners LLC (Two Dreams Outer Banks)
 - ★ Medical Director: Encounter Medical Group, P.C.
 - ★ Partner: EMGlobal LLC
 - ★ Former Consultant: GW Pharmaceuticals

Objectives



- ★ Examine circumstances leading to current situation
- ★ Explore scientific issues
- ★ Develop recommendations to assist physicians
- ★ Formulate policy recommendations
- ★ Use uniquely qualified perspective of addiction medicine

















Resources

- ★ ASAM website for Policy Statements (<http://www.asam.org>)
- ★ CLAAD for Citizen's Petition, membership, news (<http://claad.org>)
- ★ Two Dreams for clinical information (<http://www.twodreams.com>)

Thank You!

Questions?



TWO DREAMS
Chicago



TWO DREAMS
Outer Banks